



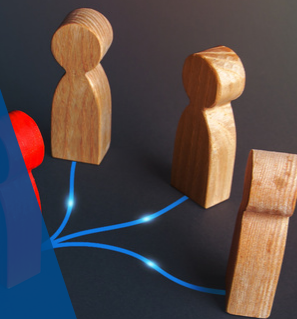
Compass Health®  
Network

# COMPASS HEALTH NETWORK

## Community Health Worker

[WWW.COMPASSHEALTHNETWORK.ORG](http://WWW.COMPASSHEALTHNETWORK.ORG)

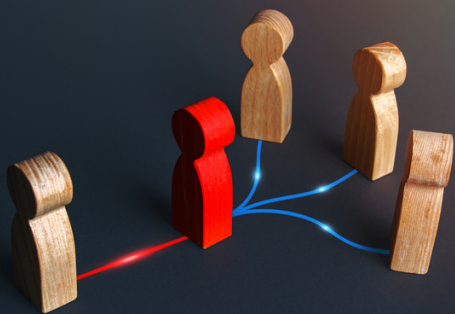
Find Your Path to Better  
Health and Wellness



Community Health Workers connect you to services and resources that can help you and your family live, feel, and be happier.

### WHAT IS A COMMUNITY HEALTH WORKER?

The Community Health Worker acts as a liaison between the health and social service community to facilitate access to services. Builds individual and community capacity by increasing health knowledge and self-sufficiency through a range of activities such as outreach, community education, informal counseling, social support, and advocacy. Improves Missourian's health by providing a connection between health systems and community resources.



## WE CAN HELP APPLY FOR:

- Food Stamps
- WIC
- Rent
- Utility Assistance
- Childcare Subsidy
- Employment
- Section 8 Housing
- Government Subsidized Phones
- Medicaid Member Benefits
- ....and more!

## ACCESSIBLE CARE ACROSS REGIONS:

Our dedicated team of community health care workers are ready to assist you whenever you receive healthcare services to support you in achieving your health and wellness goals.

**Jefferson County Region**

**Phone: 636-589-3131**

**Email: [jeffcochw@compasshn.org](mailto:jeffcochw@compasshn.org)**

## WE CAN HELP APPLY FOR:

- Food Resources
- Education or Job Training Resources
- Utility Resources
- Clothing Resources
- Transportation Resources
- Domestic Violence Resources
- Accessing Healthcare
- Medication Assistance
- ...and more!